



SDI-12 Convertible Level Transmitter

Digilevel EC™



16-bit internal digital error correction

- ▶ Low total error band over wide temperature

316L SS flush-diaphragm sensor standard

- ▶ Ensures longevity in hostile environments

SDI-12 Communication Interface

- ▶ Compatible with SDI-12 dataloggers and telemetry

Isolated sensor reference connection

- ▶ Accommodates \varnothing 3/8 inch O.D. tubing

Standard Lightning / Surge Protection

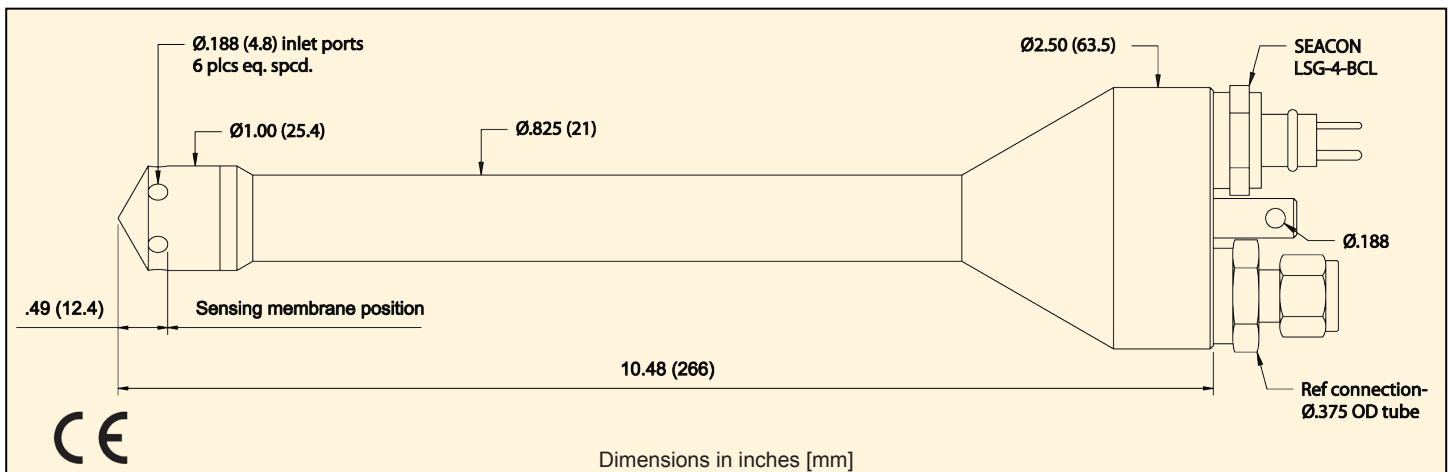
- ▶ Multi-stage protection, resets automatically

The Digilevel EC by Keller America is specifically designed for long-term deployment in adverse environments common to remote locations. The heart of this instrument is a state-of-the-art, Swiss-produced pressure sensor that incorporates over 30 years of experience in sensor development. Active error compensation circuitry results in outstanding Total Error Band performance.

The Digilevel EC is a convertible instrument which may be used for either submersible level or bubbler pressure measurement. This is accomplished by user-selectable pressure connection caps. The conical cap is designed to promote automatic cleaning of the sensing diaphragm, helpful where the submersible level transmitter is deployed in high-silt conditions. The alternate bubbler transmitter cap provides a 1/8" NPT female pipe thread for connection to the bubbler apparatus.

Also incorporated into the design are separate electrical and reference tube connections. This design minimizes problems caused by condensation of moisture in the reference tube that is possible in some environments when using all-in-one cabling that incorporates a small diameter reference tube.

The Digilevel EC is compatible with all SDI-12 v1.3 commands. In addition, it is capable of operating in several emulate modes for popular SDI-12 level/pressure transmitters including manufacturer-specific extended commands. A graphical user interface and Dongle are available options for those who may be unfamiliar with SDI-12 commands.



KELLER AMERICA, INC.

813 Diligence Drive, Suite 120 • Newport News, VA 23606 • Toll Free (877) 2-KELLER • Phone (757) 596-6680 • Fax (757) 596-6659
USA: www.kelleramerica.com • Switzerland: www.keller-druck.com

Digilevel EC



SPECIFICATIONS

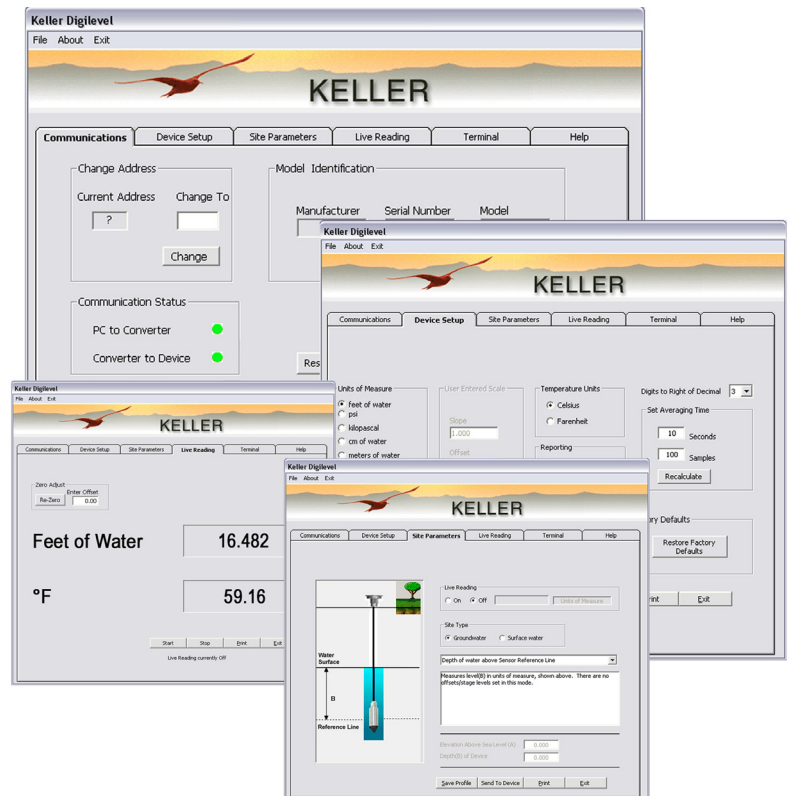
| | | | |
|---------------------------|-------------------------------|-------------------------------|---|
| AVAILABLE PRESSURE RANGES | 0-10, 0-15, and 0-30m W.C. | WETTED MATERIALS | Std. 316L Stainless Steel, Polyamide, Fluorocarbon |
| ACCURACY | | ELECTRICAL CONNECTION | Brantner/Sea-Con LSG-4-BCL - Includes 1 each LMG-4-FS3 mating connector / 0.5 m cable |
| Level | <±0.1% FS T.E.B. ¹ | BUBBLER CONNECTION | 1/8" NPT Female |
| Temperature | ± 0.5°C | REFERENCE PRESSURE CONNECTION | Compression fitting for Ø 0.375" O.D. tubing |
| Excitation | ± 0.5 VDC | | |
| RESOLUTION | 12-bit | | |
| SUPPLY | 8 - 28 VDC | WIRING CONFIGURATION | |
| PRESSURE/TEMP. OUTPUT | SDI-12 VERSION 1.3 | Pin 1 | + Supply |
| COMPENSATED TEMP. RANGE | -10...+60°C | Pin 2 | Data |
| PROTECTION RATING | IP68 | Pin 3 | Case Ground |
| | | Pin 4 | Circuit Ground |

Notes
 1. TEB: Total Error Band; Includes the combined effects of non-linearity, hysteresis and non-repeatability as well as thermal dependencies, over the compensated temperature range.

GRAPHICAL USER INTERFACE

Graphical User Interface/Dongle

- Intuitive device connection and setup utility
- Program and save multiple site configurations
- Live reading mode facilitates on-site setup
- Emulate modes for:
 - Tavis
 - Design Analysis
 - Pressure Systems/Esterline
- Terminal mode for SDI-12 command input
- Enables direct input of slope + offset parameters
- Several "canned" site parameter scenarios simplify setup



KELLER AMERICA, INC.

813 Diligence Drive, Suite 120 • Newport News, VA 23606 • Toll Free (877) 2-KELLER • Phone (757) 596-6680 • Fax (757) 596-6659
 USA: www.kelleramerica.com • Switzerland: www.keller-druck.com